

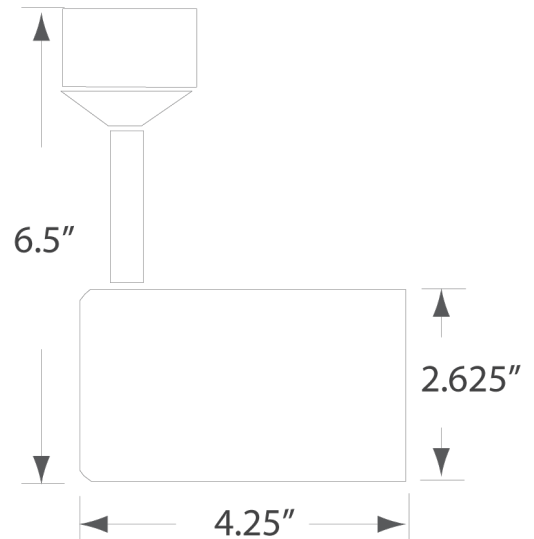
AX4060

4 Head Track Light



Specification Features

UL/ETL Listing	Dry Location
Construction	Gimbal Ring, J Compatible
Lens/Diffuser	None
Light Source	(4) E26 Socket for 10W PAR20 Bulb
Voltage	120V
Warranty	5 Years Normal Operation
Dimensions	4.25"W x 6.5"H x 2.625"D, 5' Track



Ordering Example: AX4060-40W-30K-BK



Prefix	Wattage	Color Temp.	Finish
AX4060	40W = (4) 10W PAR20 Bulb - E26 Base	30K = 3000° Kelvin	BN = Brushed Nickel BK = Black WH = White

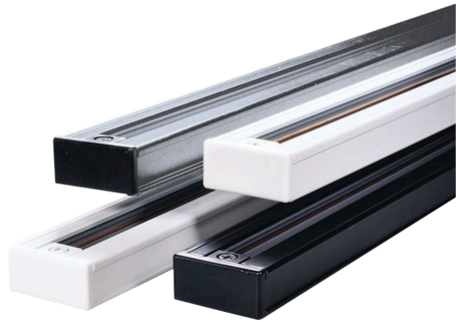
LED Track Lights

Adjustable Track



Applications

Exceptional design for residential, commercial, and hospitality applications. Perfect for great rooms, entryways, dining areas, and foyers.



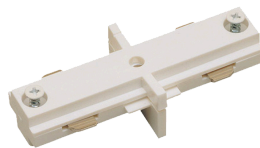
Specification Features

UL or ETL Listing	Dry Location
Material	Cold Rolled Steel, Baked Enamel
Lengths	2', 3', 4', 5'

Track Accessories



AXT106
Live End with Canopy
Black, White, or Brushed Nickel



AXT110
Mini Straight Connector
Black, White, or Brushed Nickel



AXT124
Floating Feed
Black, White, or Brushed Nickel



AXT160
Line Voltage Monopoint
Black, White, or Brushed Nickel

Ordering Example:

AXT100-BN



Prefix	Length	Finish
AXT	098 = 2 foot length 100 = 3 foot length 102 = 4 foot length 104 = 5 foot length	BN = Brushed Nickel WH = White BK = Black

LED Track Lights

Adjustable Track



Applications

Exceptional design for residential, commercial, and hospitality applications. Perfect for great rooms, entryways, dining areas, and foyers.



Specification Features

UL or ETL Listing	Dry Location
Material	Cold Rolled Steel, Baked Enamel
Lengths	2', 3', 4', 5'

Track Accessories



AXT106
Live End with Canopy
Black, White, or Brushed Nickel



AXT110
Mini Straight Connector
Black, White, or Brushed Nickel



AXT124
Floating Feed
Black, White, or Brushed Nickel



AXT160
Line Voltage Monopoint
Black, White, or Brushed Nickel

Ordering Example:

AXT100-BN



Prefix	Length	Finish
AXT	098 = 2 foot length 100 = 3 foot length 102 = 4 foot length 104 = 5 foot length	BN = Brushed Nickel WH = White BK = Black

LED Track Lights

Adjustable Track



Applications

Exceptional design for residential, commercial, and hospitality applications. Perfect for great rooms, entryways, dining areas, and foyers.



Specification Features

UL or ETL Listing	Dry Location
Material	Cold Rolled Steel, Baked Enamel
Lengths	2', 3', 4', 5'

Track Accessories



AXT106
Live End with Canopy
Black, White, or Brushed Nickel



AXT110
Mini Straight Connector
Black, White, or Brushed Nickel



AXT124
Floating Feed
Black, White, or Brushed Nickel



AXT160
Line Voltage Monopoint
Black, White, or Brushed Nickel

Ordering Example:

AXT100-BN



Prefix	Length	Finish
AXT	098 = 2 foot length 100 = 3 foot length 102 = 4 foot length 104 = 5 foot length	BN = Brushed Nickel WH = White BK = Black

LED Track Lights

Adjustable Track



Applications

Exceptional design for residential, commercial, and hospitality applications. Perfect for great rooms, entryways, dining areas, and foyers.



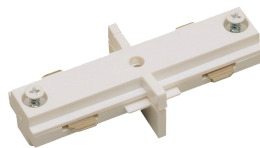
Specification Features

UL or ETL Listing	Dry Location
Material	Cold Rolled Steel, Baked Enamel
Lengths	2', 3', 4', 5'

Track Accessories



AXT106
Live End with Canopy
Black, White, or Brushed Nickel



AXT110
Mini Straight Connector
Black, White, or Brushed Nickel



AXT124
Floating Feed
Black, White, or Brushed Nickel



AXT160
Line Voltage Monopoint
Black, White, or Brushed Nickel

Ordering Example:

AXT100-BN



Prefix	Length	Finish
AXT	098 = 2 foot length 100 = 3 foot length 102 = 4 foot length 104 = 5 foot length	BN = Brushed Nickel WH = White BK = Black

LED Track Lights

Adjustable Track



Applications

Exceptional design for residential, commercial, and hospitality applications. Perfect for great rooms, entryways, dining areas, and foyers.



Specification Features

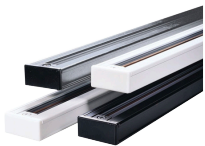
UL or ETL Listing	Dry Location
Material	Cold Rolled Steel, Baked Enamel
Lens	NA
Light Source	LED PAR30 (E26 Socket) Sold Separately
CRI	>80
Track	Adjustable
Voltage	120V
Mounting	Ceiling Mount. All necessary hardware included.

Recommended Lamp



AXLED432
11.5W • 850lm
30K, 40K, 50K

Track Accessories



AXT098 - 2 ft. Track
AXT100 - 3 ft. Track
AXT102 - 4 ft. Track
Black, White, or Brushed Nickel



AXT106
Live End with Canopy
Black, White, or Brushed Nickel



AXT110
Mini Straight Connector
Black, White, or Brushed Nickel



AXT124
Floating Feed
Black, White, or Brushed Nickel



DCT160
Line Voltage Monopoint
Black, White, or Brushed Nickel

Part	Heads	Wattage	Lumens	Kelvin	CRI	Dimensions
AXT4050-1x11.5W	1	1 x 11.5w	850lm	30K, 40K, 50K	>80	7.25" x 4"
AXT4050-3x11.5W	3	34.5w (3 x 11.5w)	2,550lm	30K, 40K, 50K	>80	7.25" x 4"
AXT4050-4x11.5W	4	46w (4 x 11.5w)	3,400lm	30K, 40K, 50K	>80	7.25" x 4"

Ordering Example:

AXT4050-3x11.5W-30K-BN



Prefix	Wattage	Kelvin/CCT	Finish
AXT4050	1x11.5W = 1x 11.5 watt E26 Socket Head 3x11.5W = 3x 11.5 watt E26 Socket Head 4x11.5W = 4x 11.5 watt E26 Socket Head	30K = 3000° Kelvin 40K = 4000° Kelvin 50K = 5000° Kelvin	BN = Brushed Nickel CH = Chrome WH = White BK = Black

LED Track Lights

Fixed Track



Applications

Exceptional design for residential, commercial, and hospitality applications. Perfect for great rooms, entryways, dining areas, and foyers.

Specification Features

UL or ETL Listing	Dry Location
Material	Cold Rolled Steel, Baked Enamel
Lens	Frosted
Light Source	LED A19 (E26 Socket) Sold Separately
CRI	>80
Track	Fixed
Voltage	120V
Mounting	Ceiling Mount. All necessary hardware included.



Recommended Lamp

AXLEDA110
9W • 800lm • 30K

AXLEDA112
9W • 800lm • 41K

Part	Heads	Wattage	Base	Lumens	Kelvin	CRI	Dimensions
AXT4142-3x9W	3	3 x 9w	E26	2,400lm	30K, 41K	>80	6.25" x 35.5" x 7"
AXT4142-4x9W	4	4 x 9w	E26	3,200lm	30K, 41K	>80	6.25" x 35.5" x 7"

Ordering Example:

AXT4142-3x9W-27K-BN

Prefix	Wattage	Kelvin/CCT	Finish
AXT4142	3x6W = 3 x 9 watt E26 Socket Head 4x6W = 4 x 9 watt E26 Socket Head	30K = 3000° Kelvin 41K = 4100° Kelvin	BN = Brushed Nickel CH = Chrome WH = White BK = Black



LED Track Lights

Fixed Track



Applications

Exceptional design for residential, commercial, and hospitality applications. Perfect for great rooms, entryways, dining areas, and foyers.

Specification Features

UL or ETL Listing	Dry Location
Material	Cold Rolled Steel, Baked Enamel
Lens	Opal White
Light Source	Integrated LED
CRI	>80
Track	Fixed
Voltage	120V
Mounting	Ceiling Mount. All necessary hardware included.



Part	Heads	Wattage	Lumens	Kelvin	CRI	Dimensions
AXT4214-4x12W	4	4 x 12w	3,680lm	30K, 40K, 50K	>80	5" x 26.75"

Ordering Example:

AXT4214-3x12W-30K-BN



Prefix	Wattage	Kelvin/CCT	Finish
AXT4214	4x12W = 4x 12 watt Integrated LED Head	30K = 3000° Kelvin 40K = 4000° Kelvin 50K = 5000° Kelvin	BN = Brushed Nickel CH = Chrome WH = White BK = Black

LED Track Lights

Adjustable Track



Applications

Exceptional design for residential, commercial, and hospitality applications. Perfect for great rooms, entryways, dining areas, and foyers.



Specification Features

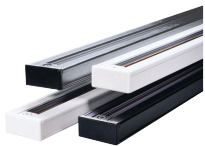
UL or ETL Listing	Dry Location
Material	Cold Rolled Steel, Baked Enamel
Lens	NA
Light Source	LED MR16 (GU10 Socket) Sold Separately
CRI	>80
Track	Adjustable
Voltage	120V
Mounting	Ceiling Mount. All necessary hardware included.

Recommended Lamp



AXLED066
6W • 450lm
30K, 40K, 50K

Track Accessories



AXT098 - 2 ft. Track
AXT100 - 3 ft. Track
AXT102 - 4 ft. Track
Black, White, or Brushed Nickel



AXT106
Live End with Canopy
Black, White, or Brushed Nickel



AXT110
Mini Straight Connector
Black, White, or Brushed Nickel



AXT124
Floating Feed
Black, White, or Brushed Nickel



AXT160
Line Voltage Monopoint
Black, White, or Brushed Nickel

Part	Heads	Wattage	Base	Lumens	Kelvin	CRI	Dimensions
AXT4218-1x6W	1	6w	GU10	450lm	30K, 40K, 50K	>80	6" x 2.25" x 3"
AXT4218-3x6W	3	18w (3 x 6w)	GU10	1,350lm	30K, 40K, 50K	>80	6" x 2.25" x 3"
AXT4218-4x6W	4	24w (4 x 6w)	GU10	1,800lm	30K, 40K, 50K	>80	6" x 2.25" x 3"

Ordering Example:

AXT4218-3x6W-30K-BN



Prefix	Wattage	Kelvin/CCT	Finish
AXT4218	1x18W = 1 x 6 watt GU10 Socket Head 3x18W = 3 x 6 watt GU10 Socket Head 4x24W = 4 x 6 watt GU10 Socket Head	30K = 3000° Kelvin 40K = 4000° Kelvin 50K = 5000° Kelvin	BN = Brushed Nickel CH = Chrome WH = White BK = Black

LED Track Lights

Adjustable Track



Applications

Exceptional design for residential, commercial, and hospitality applications. Perfect for great rooms, entryways, dining areas, and foyers.



Specification Features

UL or ETL Listing	Dry Location
Material	Cold Rolled Steel, Baked Enamel
Lens	NA
Light Source	LED MR16 (GU10 Socket) Sold Separately
CRI	>80
Track	Adjustable
Voltage	120V
Mounting	Ceiling Mount. All necessary hardware included.



Recommended Lamp
 AXLED066
 6W • 450lm
 30K, 40K, 50K

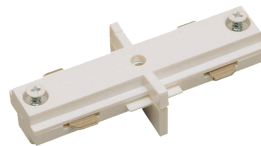
Track Accessories



AXT098 - 2 ft. Track
AXT100 - 3 ft. Track
AXT102 - 4 ft. Track
 Black, White, or Brushed Nickel



AXT106
 Live End with Canopy
 Black, White, or Brushed Nickel



AXT110
 Mini Straight Connector
 Black, White, or Brushed Nickel



AXT124
 Floating Feed
 Black, White, or Brushed Nickel



AXT160
 Line Voltage Monopoint
 Black, White, or Brushed Nickel

Part	Heads	Wattage	Base	Lumens	Kelvin	CRI	Dimensions
AXT4220-3x6W	3	1 x 6w	GU10	450lm	30K, 40K, 50K	>80	3.75" x 3.81" x 3.25"
AXT4220-3x6W	3	18w (3 x 6w)	GU10	1,350lm	30K, 40K, 50K	>80	3.75" x 3.81" x 3.25"
AXT4220-4x6W	4	24w (4 x 6w)	GU10	1,800lm	30K, 40K, 50K	>80	3.75" x 3.81" x 3.25"

Ordering Example:
 AXT4220-3x6W-30K-BN



Prefix	Wattage	Kelvin/CCT	Finish
AXT4220	1x6W = 1 x 6 watt GU10 Socket Head 3x6W = 3 x 6 watt GU10 Socket Head 4x6W = 4 x 6 watt GU10 Socket Head	30K = 3000° Kelvin 40K = 4000° Kelvin 50K = 5000° Kelvin	BN = Brushed Nickel CH = Chrome WH = White BK = Black

LED Track Lights

Adjustable Track



Applications

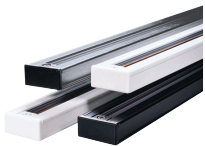
Exceptional design for residential, commercial, and hospitality applications. Perfect for great rooms, entryways, dining areas, and foyers.



Specification Features

UL or ETL Listing	Dry Location
Material	Cold Rolled Steel, Baked Enamel
Lens	NA
Light Source	Integrated LED
CRI	>80
Track	Adjustable
Voltage	120V
Mounting	Ceiling Mount. All necessary hardware included.

Track Accessories



AXT098 - 2 ft. Track
AXT100 - 3 ft. Track
AXT102 - 4 ft. Track
 Black, White, or Brushed Nickel



AXT106
 Live End with Canopy
 Black, White, or Brushed Nickel



AXT110
 Mini Straight Connector
 Black, White, or Brushed Nickel



AXT124
 Floating Feed
 Black, White, or Brushed Nickel



AXT160
 Line Voltage Monopoint
 Black, White, or Brushed Nickel

Part	Heads	Wattage	Lumens	Kelvin	CRI	Dimensions
AXT4224-1x14.5W	1	14.5w	935lm	30K, 40K, 50K	>80	3.18" x 6.06" x 5.43"
AXT4224-3x14.5W	3	43.5w (3x 14.5w)	2,805lm	30K, 40K, 50K	>80	3.18" x 6.06" x 5.43"
AXT4224-4x14.5W	4	58w (4x 14.5w)	3,740lm	30K, 40K, 50K	>80	3.18" x 6.06" x 5.43"

Ordering Example:

AXT4224-3x14.5W-30K-BN



Prefix	Wattage	Kelvin/CCT	Finish
AXT4224	1x14.5W = 1x 14.5 watt Integrated LED Head 3x14.5W = 3x 14.5 watt Integrated LED Head 4x14.5W = 4x 14.5 watt Integrated LED Head	30K = 3000° Kelvin 40K = 4000° Kelvin 50K = 5000° Kelvin	BN = Brushed Nickel CH = Chrome WH = White BK = Black

LED Track Lights

Adjustable Track



Applications

Exceptional design for residential, commercial, and hospitality applications. Perfect for great rooms, entryways, dining areas, and foyers.

Specification Features

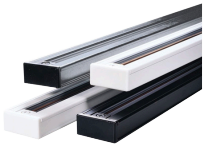
UL or ETL Listing	Dry Location
Material	Cold Rolled Steel, Baked Enamel
Lens	NA
Light Source	LED MR16 (GU10 Socket) Sold Separately
CRI	>80
Track	Adjustable
Voltage	120V
Mounting	Ceiling Mount. All necessary hardware included.



Recommended Lamp

AXLED066
6W • 450lm
30K, 40K, 50K

Track Accessories



AXT098 - 2 ft. Track
AXT100 - 3 ft. Track
AXT102 - 4 ft. Track
Black, White, or Brushed Nickel



AXT106
Live End with Canopy
Black, White, or Brushed Nickel



AXT110
Mini Straight Connector
Black, White, or Brushed Nickel



AXT124
Floating Feed
Black, White, or Brushed Nickel



AXT160
Line Voltage Monopoint
Black, White, or Brushed Nickel

Part	Heads	Wattage	Base	Lumens	Kelvin	CRI	Dimensions
AXT4226-1x6W	1	1 x 6w	GU10	450lm	30K, 40K, 50K	>80	6" x 2.25"
AXT4226-3x6W	3	18w (3 x 6w)	GU10	1,350lm	30K, 40K, 50K	>80	6" x 2.25"
AXT4226-4x6W	4	24w (4 x 6w)	GU10	1,800lm	30K, 40K, 50K	>80	6" x 2.25"

Ordering Example:

AXT4226-3x6W-30K-BN



Prefix	Wattage	Kelvin/CCT	Finish
AXT4226	1x6W = 1x 6 watt GU10 Socket Head 3x6W = 3x 6 watt GU10 Socket Head 4x6W = 4x 6 watt GU10 Socket Head	30K = 3000° Kelvin 40K = 4000° Kelvin 50K = 5000° Kelvin	BN = Brushed Nickel CH = Chrome WH = White BK = Black

LED Track Lights

Fixed Track



Applications

Exceptional design for residential, commercial, and hospitality applications. Perfect for great rooms, entryways, dining areas, and foyers.

Specification Features

UL or ETL Listing	Dry Location
Material	Cold Rolled Steel, Baked Enamel
Lens	NA
Light Source	LED MR16 (GU10 Socket) Sold Separately
CRI	>80
Track	Fixed
Voltage	120V
Mounting	Ceiling Mount. All necessary hardware included.



Recommended Lamp

AXLED066
6W • 450lm
30K, 40K, 50K

Part	Heads	Wattage	Base	Lumens	Kelvin	CRI	Dimensions
AXT4228-3x6W	3	3 x 6w	GU10	1,350lm	30K, 40K, 50K	>80	13.25" x 32.88" x 5.13"
AXT4228-4x6W	4	4 x 6w	GU10	1,800lm	30K, 40K, 50K	>80	13.25" x 32.88" x 5.13"

Ordering Example:

AXT4228-3x6W-30K-BN



Prefix	Wattage	Kelvin/CCT	Finish
AXT4228	3x6W = 3 x 6 watt GU10 Socket Head 4x6W = 4 x 6 watt GU10 Socket Head	30K = 3000° Kelvin 40K = 4000° Kelvin 50K = 5000° Kelvin	BN = Brushed Nickel CH = Chrome WH = White BK = Black

LED Track Lights

Fixed Track



Applications

Exceptional design for residential, commercial, and hospitality applications. Perfect for great rooms, entryways, dining areas, and foyers.

Specification Features

UL or ETL Listing	Dry Location
Material	Cold Rolled Steel, Baked Enamel
Lens	NA
Light Source	LED MR16 (GU10 Socket) Sold Separately
CRI	>80
Track	Fixed
Voltage	120V
Mounting	Ceiling Mount. All necessary hardware included.



Recommended Lamp

AXLED066
6W • 450lm
30K, 40K, 50K

Part	Heads	Wattage	Base	Lumens	Kelvin	CRI	Dimensions
AXT4232-3x6W	3	3 x 6w	GU10	1,350lm	30K, 40K, 50K	>80	13.25" x 32.88" x 5.13"
AXT4232-4x6W	4	4 x 6w	GU10	1,800lm	30K, 40K, 50K	>80	13.25" x 32.88" x 5.13"

Ordering Example:

AXT4232-3x6W-30K-BN



Prefix	Wattage	Kelvin/CCT	Finish
AXT4232	3x6W = 3 x 6 watt GU10 Socket Head 4x6W = 4 x 6 watt GU10 Socket Head	30K = 3000° Kelvin 40K = 4000° Kelvin 50K = 5000° Kelvin	BN = Brushed Nickel CH = Chrome WH = White BK = Black

LED Track Lights

Adjustable Track



Applications

Exceptional design for residential, commercial, and hospitality applications. Perfect for great rooms, entryways, dining areas, and foyers.



Specification Features

UL or ETL Listing	Dry Location
Material	Cold Rolled Steel, Baked Enamel
Lens	NA
Light Source	LED MR16 (GU10 Socket) Sold Separately
CRI	>80
Track	Adjustable
Voltage	120V
Mounting	Ceiling Mount. All necessary hardware included.



Recommended Lamp

AXLED066
6W • 450lm
30K, 40K, 50K

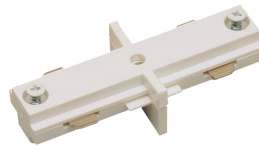
Track Accessories



AXT098 - 2 ft. Track
AXT100 - 3 ft. Track
AXT102 - 4 ft. Track
Black, White, or Brushed Nickel



AXT106
Live End with Canopy
Black, White, or Brushed Nickel



AXT110
Mini Straight Connector
Black, White, or Brushed Nickel



AXT124
Floating Feed
Black, White, or Brushed Nickel



AXT160
Line Voltage Monopoint
Black, White, or Brushed Nickel

Part	Heads	Wattage	Base	Lumens	Kelvin	CRI	Dimensions
AXT4500-1x6W	1	6w	GU10	450lm	30K, 40K, 50K	>80	48" x 3.75" x 2.25"
AXT4500-3x6W	3	18w (3 x 6w)	GU10	1,350lm	30K, 40K, 50K	>80	48" x 3.75" x 2.25"
AXT4500-4x6W	4	24w (4 x 6w)	GU10	1,800lm	30K, 40K, 50K	>80	48" x 3.75" x 2.25"

Ordering Example:

AXT4500-3x6W-30K-BN



Prefix	Wattage	Kelvin/CCT	Finish
AXT4500	1x6W = 1x 6 watt GU10 Socket Head 3x6W = 3x 6 watt GU10 Socket Head 4x6W = 4x 6 watt GU10 Socket Head	30K = 3000° Kelvin 40K = 4000° Kelvin 50K = 5000° Kelvin	BN = Brushed Nickel CH = Chrome WH = White BK = Black